

V 100 Special
- variable displacement traction -



Photo doesn't show standard machine

EVOLUTION FOR ANY PROJECT



Increased 20.5 HP motor applied to self-propelled hydraulic drive by means of a variable displacement pump (P.P.V.)

- this application allows the marking machine to always maintain the desired working speed, keeping it so during the ascents and descents automatically
- the increase in engine power and variable displacement traction increase the performance, in terms of power, speed and safety, of the marking machine.
- the road marking machine is more linear in the delivery of power (both when braking and accelerating) during use.

(STANDARD)



Electronic device for broken lines (AEV1):

After years of scrupulous studies, the Vezvani's electronic assistant (AEV1) is now available.

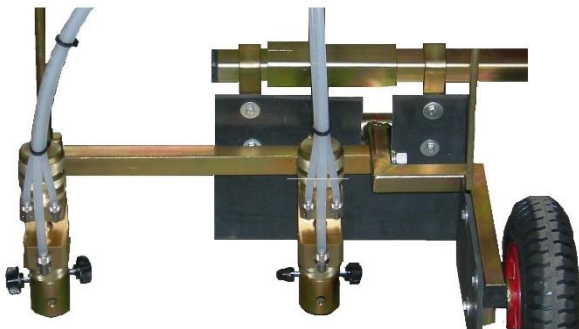
- possibility to set any measurement ("full / empty") of broken line to be made.

- the system allows you to count the meters of paint actually applied during work.

- the system allows the control of: speed and hours of work, total distance, battery voltage.

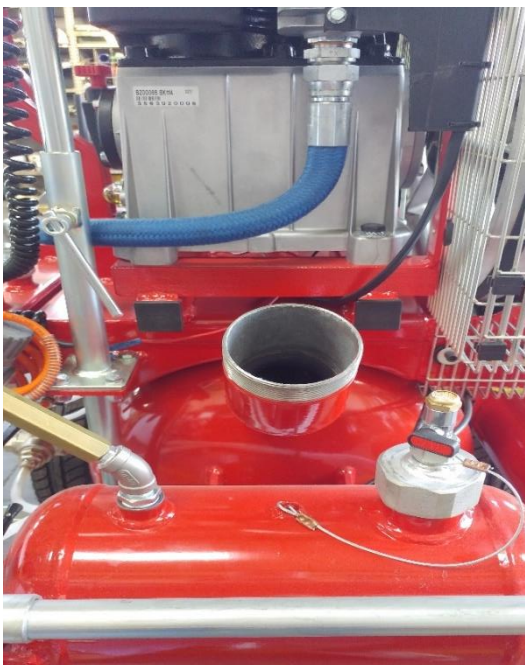
Applicable to all machines equipped with an electric start engine (R30 SS / 50 with electric start, R30 SS / 100 and V 100 Special)

(ACCESSORIES AVAILABLE)



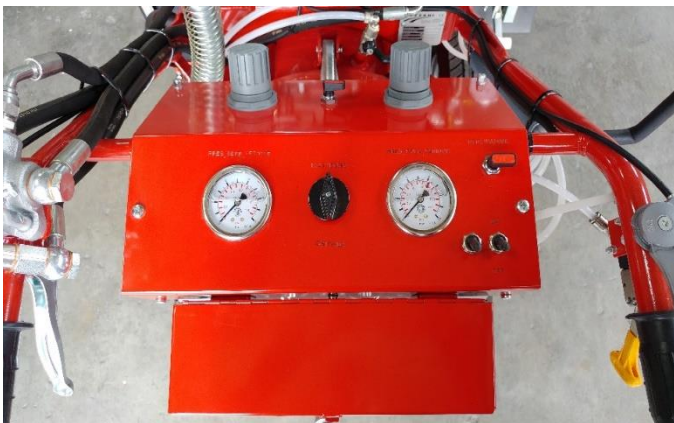
*Second automatic gun kit , line up to 60 cm.
(increased compressor → 840 lt/min.)*

(ACCESSORIES AVAILABLE)



Comfortable and large paint load

(STANDARD)



Dashboard:

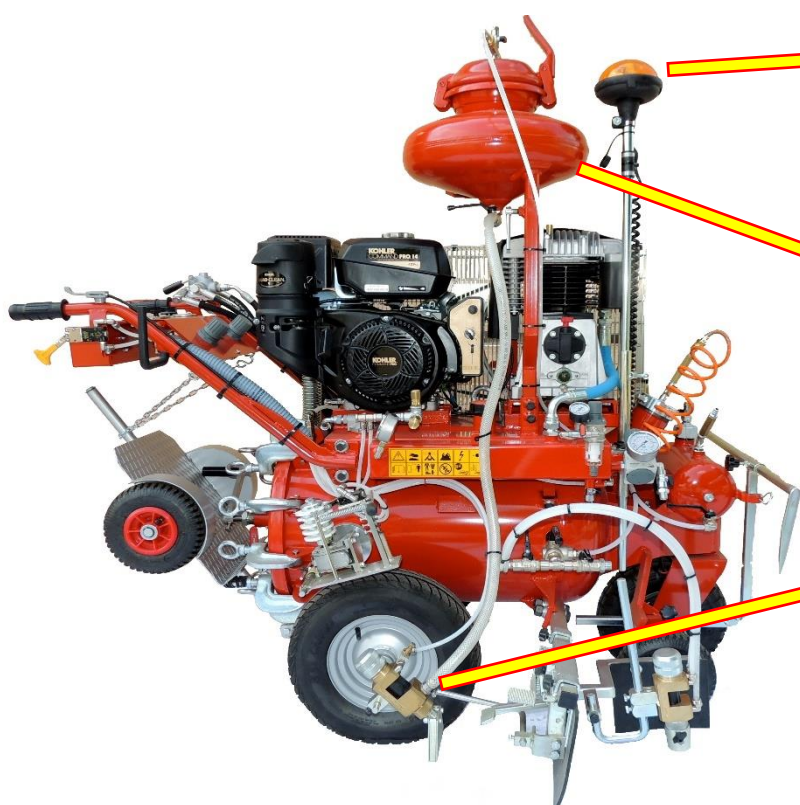
Control lights, pressures and main controls directly from the driving position.

(STANDARD)



Revolving front wheel

(STANDARD)



Electric start engine, revolving headlamp (LED) and deepness light (LED)

(STANDARD)

Pneumatic spread glass beads device:

*Includes tank and automatic bead spreading gun (linear meters creation)
Also available in manual version (production of square meters, templates and molds)*

(ACCESSORIES AVAILABLE)

Technical details: V 100 Special - Variable Displacement Traction - hydraulic self propelled -

Weight: 290 kg. Dimension: 150x110x125 cm.

Engine : petrol, 20,5 hp with electric start and clutch to facilitate starting. 10 liter petrol tank positioned in an ergonomic position.

Compressor : Fini capacity 585 lt/min. (increased for possible 2nd automatic gun → 840 lt.min)

Tank : 100 lt. (PED tested) with built-in mixer. Safety valves and check valves.

Spraying unit : composed of automatic gun for refracting and ordinary paints. Telescope unit with copy wheel, for lines from 10 cm to 30 cm. (Second automatic gun kit , line up to 60 cm).

Hydraulic drive : self-propelled hydraulic drive through variable displacement pump. Danfoss hydraulic motors on the rear wheels. Manipulator control for forward running, hydraulic brake in central position and reverse (standard equipment)

Other standard equipment :

- Dashboard
- Operator trolley
- Adjustable handlebars
- Front steering wheel with mechanical block in a straight line (possibility of locking / unlocking with pneumatic piston)
- Spraying device washing tank 6 lt
- Mechanical brake on front wheel
- Telescopic indicator
- Revolving headlamp (LED) and deepness light (LED)

Accessories available:

- Second automatic gun kit (line up to 60 cm.)
- Pneumatic spread glass beads device
- Speed increase
- Gun manual type (with rigid extension) mod. Vezzani
- Supplementary container for a different color (10 lt.)
- Automatic device for broken lines
- Electronic device for broken lines Vezzani (AEV1)

Overall dimension in working position : Cm. 150 x 110 x 125

Weights with no load : Kg. 290

VEZZANI

The logo for Vezzani features the brand name in a bold, red, sans-serif font. Below the text are two stylized, curved red lines that sweep upwards and to the right, creating a sense of motion and speed.

Made in Italy

The 'Made in Italy' logo consists of the text 'Made in Italy' in a black, serif font. To the right of the text is a stylized graphic of the Italian flag's colors (green, white, and red) arranged in a curved, wave-like pattern.

Spray guns, steel frame and mounting are strictly hand-made under strict controls and operational and robustness criteria. They guarantee high quality roadmarking machine and a high durability over time.